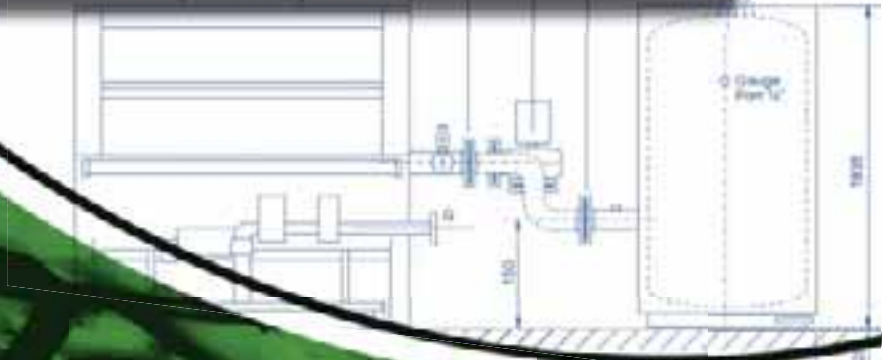


STOKVIS

ENERGY SYSTEMS



ECONOPAK

COMMERCIAL & INDUSTRIAL
WATER HEATERS

ECONOPAK

The STOKVIS ECONOPAK water heater produces hot water for both commercial and industrial use.

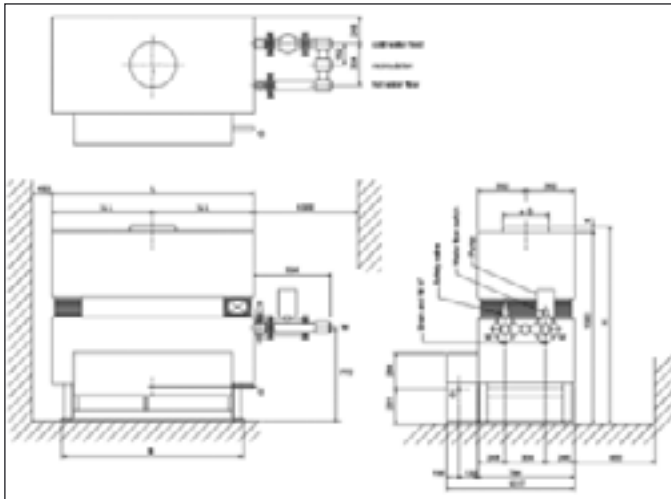
An extensive range of outputs are available from 57.7kW to 1002kW .This range of outputs is covered by four different product ranges :- the ECONOPAK 2000 and ECONOPAK 2000 plus, the ECONOPAK R18 and ECONOPAK R18 plus : - consisting of a 36 model line up !

The 'plus' suffix denotes the use of a buffer vessel and manifold arrangement specifically designed for optimum performance.

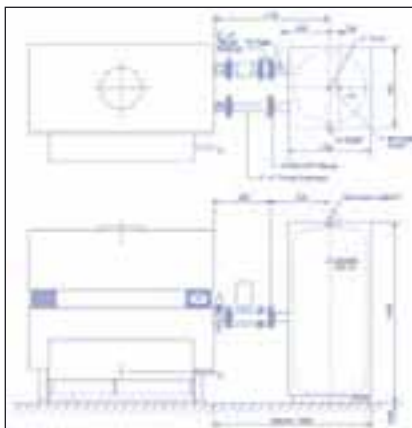
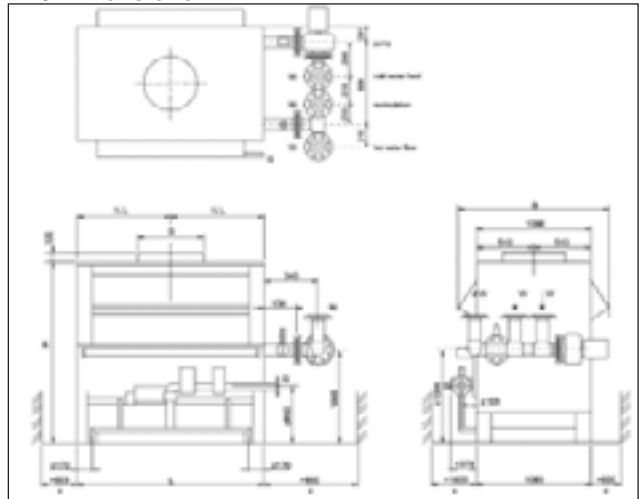
The ECONOPAK range of water heaters incorporates many unique benefits

- Burners modulate between 30% and full load allowing varying loads to be matched
- All have atmospheric burners meaning very quiet operation.
- Very light weight to output ratio – roof top installation or similar is possible.
- Large hot water demands can be easily catered for.
e.g from 989 litres/hr @ 60°C (delta T 50° C) to 17,177 litres/hr @ 60°C (delta T 50° C)
- Extruded finned copper heat exchangers giving rapid heat transfer.
- Stainless steel manifolds – longevity and potable water quality.
- Installations throughout Europe – credibility established over many years.

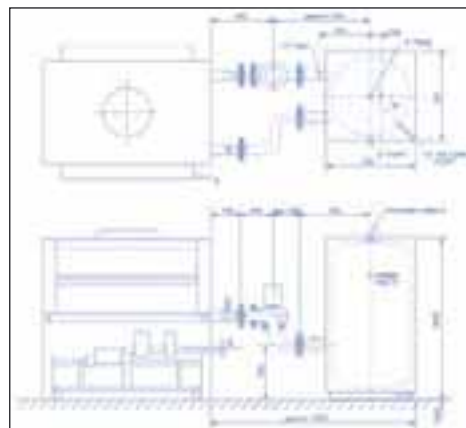
R2000 Dimensions



R18 Dimensions



R2000 PLUS with BT 500 litre tank



R18 PLUS with BT 500 litre tank

ECONOPAK R2000 and R18 WATER HEATER TECHNICAL DATA

	R2000												R18								
Type		R2017	R2022	R2028	R2034	R2041	R2048	R2056	R2066	R2077	R2090	R2105	R2122		132	154	180	210	244	280	
Nominal heat output	kW	57.7	74.6	95.8	116.7	139.1	162.7	190.7	222.1	261.1	309.0	361.0	425.0	kW	481	558	649	756	875	1002	
Nominal heat input (nett. CV)	kW	65.5	84.8	107.7	131.6	158.6	185.5	217.4	253.3	296.2	348.0	403.9	470.7	kW	538	625	727	846	980	1122	
Gas consumption													Gas consumption								
natural gas H (10,9 kWh/m ³)	m ³ /h	6.0	7.9	9.9	12.2	14.7	17.2	20.2	23.5	27.5	32.3	37.4	43.6	m ³ /h	49.3	57.9	67.4	78.4	90.8	104.0	
Propane	m ³ /h	2.3	2.9	3.8	4.7	5.6	6.6	7.7	8.9	10.5	12.3	14.3	16.6	m ³ /h	19.0	22.1	25.7	29.9	34.7	39.7	
Gas inlet pressure (min)	mbar	17	17	17	17	17	17	17	17	17	17	17	17	mbar	17	17	17	17	17	17	
(max)	mbar	25	25	25	25	25	25	25	25	25	25	25	25	mbar	25	25	25	25	25	25	
Propane (max)	mbar	50	50	50	50	50	50	50	50	50	50	50	50	mbar	50	50	50	50	50	50	
Water volume	dm ³	5.6	5.9	6.2	6.5	6.9	7.3	7.7	8.3	8.9	9.6	10.5	11.4	dm ³	22.0	23.2	24.6	26.3	28.1	30.1	
Max. working pressure	bar	11	11	11	11	11	11	11	11	11	11	11	11	bar	11	11	11	11	11	11	
Flue connection D	mm	200	225	250	250	300	300	350	350	400	400	450	450	mm	450	500	550	600	650	700	
Gas connection G		¾"	¾"	1"	1"	1"	1"	1½"	1½"	1½"	1½"	1½"	1½"		2"	2"	2"	2"	DN65 PN16	DN65 PN16	
Water connections													Water connections								
Cold water feed + hot water flow W		2"	2"	2"	2"	2"	2"	2"	2"	2"	2"	2"	2"		DN80 PN16	DN80 PN16	DN80 PN16	DN80 PN16	DN80 PN16	DN80 PN16	
Recirculation		1½"	1½"	1½"	1½"	1½"	1½"	1½"	1½"	1½"	1½"	1½"	1½"		DN80 PN16	DN80 PN16	DN80 PN16	DN80 PN16	DN80 PN16	DN80 PN16	
Pressure relief valve																					
Boiler Connection		½"	½"	½"	¾"	¾"	¾"	1"	1"	1"	1"	1¼"	1¼"		1¼"	1¼"	1¼"	1½"	1½"	1½"	
Relief connection		½"	½"	½"	¾"	¾"	¾"	1¼"	1¼"	1¼"	1¼"	1½"	1½"		1½"	1½"	1½"	2"	2"	2"	
Standard setting	bar	5	5	5	5	5	5	5	5	5	5	5	5	bar	5	5	5	5	5	5	
Electrical supply																					
Water Heater 1ph	V	230	230	230	230	230	230	230	230	230	230	230	230	V	230	230	230	230	230	230	
Pump 3ph	V	400	400	400	400	400	400	400	400	400	400	400	400	V	400	400	400	400	400	400	
Frequency	Hz	50	50	50	50	50	50	50	50	50	50	50	50	Hz	50	50	50	50	50	50	
Fuse	A	6	6	6	6	6	6	6	6	6	6	6	6	A	6	6	6	6	6	6	
Max. electrical consumption																					
Water Heater	kW	0.04	0.04	0.04	0.04	0.04	0.04	0.04	0.04	0.04	0.04	0.04	0.04	kW	0.04	0.04	0.04	0.04	0.04	0.04	
Pump	kW	0.25	0.25	0.25	0.37	0.37	0.37	0.37	0.37	0.37	0.75	0.75	0.75	kW	0.75	0.75	0.75	0.75	0.75	0.75	
Dimensions	depth	mm	1017	1017	1017	1017	1017	1017	1017	1017	1017	1017	1017	mm	1633	1633	1633	1633	1618	1618	
	height	mm	1612	1612	1612	1612	1612	1612	1612	1632	1632	1652	1652	mm	1795	1795	1795	1795	1895	1895	
	length	mm	820	898	994	1090	1200	1312	1438	1598	1772	1978	2216	2486	mm	1461	1636	1842	2080	2350	2636
Weight, empty, ± 5 %	kg	225	240	255	270	290	310	335	360	395	430	470	520	kg	620	660	705	760	820	885	
Table 1 Technical Data																					
- Heat output measured with :	60 - 80 °C												60 - 80 °C								
- Gas consumption at	1013 mbar. 15 °C, dry												1013 mbar. 15 °C, dry								
- Gas specification	II _{2H3P}												II _{2H3P}								
- Appliance category	B11												B11								
- Protection degree	IP30												IP30								

Changes in specifications and dimensions

The manufacturer reserves the right to change the above mentioned dimensions without prior notice.

Because of manufacturing tolerances, the above mentioned dimensions can vary slightly.

STOKVIS Energy Systems maintenance and after sales service

You can be sure that your new Stokvis product is the very best of its type in design, materials and construction. However to obtain the maximum benefits from your quality product, it is essential that it is maintained at maximum efficiency throughout its long working life.

For this reason, STOKVIS Energy Systems provides full UK cover with factory trained engineers to offer you a total service opportunity throughout the year.

This ensures that your equipment can be checked, serviced and, if necessary, adjusted to ensure that maximum energy saving performance. Also, in the unlikely event of a breakdown, repairs can be tackled speedily and cost effectively – wherever you are in the UK. Just phone, fax or e-mail STOKVIS Energy Systems for prompt professional attention to your needs.



The company



Since the early 1980's, STOKVIS Energy Systems has been acknowledged as the vanguard in its field for both quality of products and customer service.

It is our dedicated objective to continue to excel at providing you our customers and partners with both the products and services you need in these most demanding and dynamic times both now and into the future.

Ivan Thompson
Managing Director

ENERGY PRODUCTS

High Efficiency
and Condensing
Gas Fired Boilers

•

Hot Water Plate Heat
Exchanger Packages

•

High Efficiency Sanitary
Hot Water Packages

•

Dual Fuel Boilers

•

Pressurisation and Booster Sets

•

Steel Panel and Low
Temperature Radiators

•

Packaged Plant Rooms

•



STOKVIS
ENERGY SYSTEMS

STOKVIS INDUSTRIAL BOILERS
(INTERNATIONAL) LIMITED
96R Walton Road East Molesey Surrey KT8 0DL
TELEPHONE 08707 707747 • FACSIMILE 08707 707767
Email: info@stokvisboilers.com • Website: <http://www.stokvisboilers.com>